

KVAC59PE / KVAC60PE

Kerrick Shockproof Vacuum

Industrial two / three motor vacuum cleaner - 90L



High-impact, corrosion-proof wet and dry vacuum designed for industrial use.

- Powerful 2 (KVAC59PE) or 3 (KVAC60PE) x 1000 watt motors
- 90 litre tank capacity with practical drain hose
- Large rear wheels and front castors for easier manoeuvring
- Large rear handle for enhanced mobility
- One year commercial warranty
- Standard models include 2.5m flexible hose, chrome extension set, dry floor tool, squeegee tool, crevice tool, round brush, textile filter
- Pump out option available (KVAC59PE/P), with submersible pump for transfer of greater volume of waste water. Includes flexible 2.5m hose, chrome extension set, squeegee tool

Technical specifications

Description	Unit	KVAC59PE	KVAC60PE
Part no.		KVAC59PE KVAC59PE/P	KVAC60PE
Input	Volts	240	240
Rated Power	Watts	2 x 1000	3 x 1000
Airflow	L/min.	6000	9000
Vacuum	mbar	190	205
Sound Pressure Level	dB(A)	65	66
Tank Capacity	L	90	90
Dimensions	mm (HxWxL)	930x480x620	930x480x620
Hose Length	m	2.5	2.5
Cable Length	m	10	10
Weight	kg	23(PE)/ 29(PE/P)	26
Accessory Diameter	mm	50	50

Specifications and details are subject to change without prior notice.

Accessories

- VP6010500 - Flexible hose 2.5m
- VP2511600 - Chrome extension
- VP6010000 - Dry floor tool
- VP6010011 - Squeegee tool
- VP2511610 - Crevice tool
- VP2511615 - Round brush
- VP6830000 - Textile filter
- VP2512000 - PVC extension tube 500mm
- VP6830030 - Paper filter bag w/cap 19L
- VP3001220 - Nylon filter
- VP2512610 - Carpet tool
- VP6200150 - Antifoam device
- VP2512744 - HEPA filter
- VP2512743 - Cartridge filter

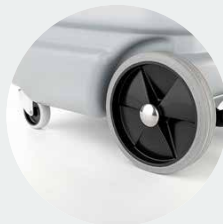
VP5830022 - 500mm accessory set - 3m flexible hose, extension set, round brush, crevice tool, adjustable wet floor tool, 50mm connection



Ergonomic handle



90L shock-proof container



Front castor wheels, rear large wheels



Drain hose



Motor head quick release

Kerrick Australia
1300 KERRICK (1300 537 742)
sales@kerrick.com.au
www.kerrick.com.au

 **KERRICK**
PART OF THE NILFISK GROUP